



TOWN OF STAR CITY

MAY

2020 NEWSLETTER



The May Council Meeting has been scheduled for Monday, May 11th, 2020 @ 1:00pm

UTILITY BILL PAYMENTS & TAX PAYMENTS

UTILITY BILL PAYMENTS & TAX PAYMENTS CAN BE PAID BY THE FOLLOWING METHODS:

- **ONLINE** (BMO, CIBC, AFFINITY CREDIT UNION, CORNERSTONE CREDIT UNION, SCOTIA BANK)
- **BY MAIL** – P.O BOX 250, STAR CITY, SK. S0E 1P0
- **OVER THE PHONE WITH CREDIT CARD**
- **AT A BANK OR FINANCIAL INSTITUTION**
- **E-TRANSFER** – PLEASE CALL THE OFFICE TO SET UP
- **DROP BOX** – (LOCATED ON THE SOUTH WALL OF TOWN OFFICE)

**** PLEASE PUT CASH/CHEQUE IN ENVELOPE WITH NAME WRITTEN ON IT**

NOTE: THE DROP BOX WILL ONLY BE OPEN DURING REGULAR BUSINESS HOURS

**TOWN OFFICE HOURS:
MONDAY – FRIDAY 8:00AM – 4:30PM
(UNLESS OTHERWISE NOTED)**

As many residents know already, the Town office is temporarily closed to the public during the COVID-19 pandemic. Please call the office if you have any questions @ 306-863-2282.

ATTENTION PET OWNERS!

We have had some concerns about dogs running at large. Please be advised that your animals must be kept on your own property. Please keep your pet(s) on a leash while out walking.

If you are walking your animal and they defecate, you are expected to pick it up and dispose of it in a sanitary manner. If your animal excretes on your neighbor's property, you can be held responsible for removing it.

Thank you for being a responsible pet owner!



The Star City Rec Board is now accepting applications for: local community group funding requests for Saskatchewan Lotteries Community Grant Fund.

If you have any questions please contact Anita Tkachuk @ 306-863-2282

The Saskatchewan Lotteries Community Grant Program is a partnership among Sask Sport Inc., SaskCulture Inc. and the Saskatchewan Parks and Recreation Association Inc. and assists in the development of sport, culture and recreation programs by providing funds to non-profit community organizations operated by volunteers.



Saskatchewan
Parks and Recreation
Association



Spring has sprung and the Town is once again picking up compost and tree branches in an effort to keep the Town looking neat & tidy. This service is provided free of charge however please note that our Public Works staff are busy during the summer months, so a limited amount of time is assigned for this task. Monday & Wednesday mornings (if time & weather permits) has been designated for compost & tree branch pick up. If you have an excess amount of trees and/or compost, please contact our office to make arrangements to have them removed. Additional charges may apply. Just a reminder NOT to put dog waste into the compost bags – it belongs in the garbage!

As a reminder compost bags are available free of charge at the Town Office. Due to the office being closed at this time please call the Town Office or knock on the window and we will place the bags outside the door for you. Remember to keep compost bags at a manageable weight and remember no rocks or garbage! Please put compost in clear bags and not in boxes!



Branches should be stacked on the boulevard piled parallel to the road in no more than 8-10 foot lengths. The reason we like to have them alongside the boulevard is for easy access and removal. Removal with the skid steer can damage boulevards so keeping them on a harder surface makes it easier for everyone.

REMINDER NOT TO PRUNE ELM TREES FROM APRIL 1ST AUGUST 31ST



To reduce the risk of Dutch elm disease (DED), pruning of elm trees is prohibited throughout Saskatchewan each year from April 1 until August 31. Fresh cuts from pruning can attract the beetles that spread the disease, increasing the chance of an infection. The annual pruning ban is in effect during the time of year when elm bark beetles are most active. Pruning is an important part of regular elm tree care and is encouraged, before and after the annual ban period. Proper pruning helps keep trees healthy and better able to resist disease. The removal of dead and dying elm wood through pruning also helps to reduce beetle breeding habitat and control the beetle population. Timely and proper disposal of the pruned wood is also essential to keep DED from spreading. Throughout the year, including the ban period, prompt removal of infected elms is critical to effective disease management.

For more information visit www.gov.sk.ca



Mother's Day is on Sunday,
May 10th, 2020



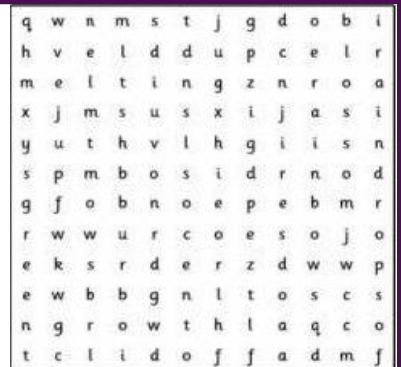
Victoria Day is on Monday,
May 18th, 2020
Have a Happy & Safe Long Weekend!



SPRING WORD SEARCH



blossom
melting
seeds
daffodil
puddle
sunshine
green
rainbow
tulips
growth
raindrops
umbrella



REMINDER TO WATCH BEFORE YOU SPRAY!

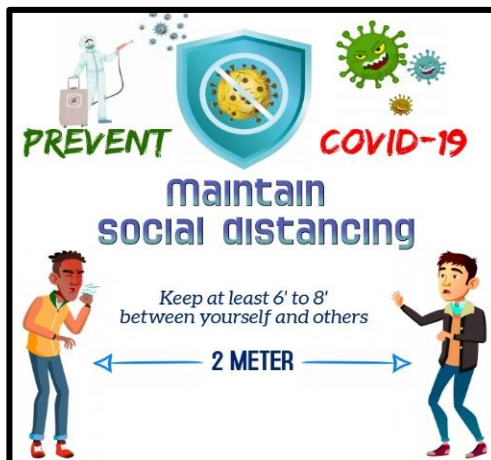
PLEASE BE CONSIDERATE OF YOUR
NEIGHBOURS WHEN USING BROAD LEAF
SPRAY THIS SEASON!
PLEASE CHECK THE DIRECTION OF WIND
BEFORE YOU SPRAY AS SOME PEOPLE DO
NOT APPRICIATE THE CHEMICAL
BLOWING INTO THEIR YARDS!

DO YOU HAVE SCRAP METAL LAYING AROUND?

A scrap metal container is located at the Star City Auto Body. If
you have any scrap metal you can drop it off
in the bright green container.

**** ONLY METAL IS ALLOWED IN THIS BIN!!****

Cameras are on premise. Please respect the rules!



PARKS & PLAYAREAS

At this time the
Saskatchewan Health
Authority recommends to
STAY AWAY from Parks and
Play Areas. The surface of
play structures are high
touched areas and can be
dirty and full of germs.
Protect yourself from
COVID-19.



TOWN OFFICE HOURS

OPEN MON -FRI 8:00AM - 4:30PM
CLOSED FROM 12:00 - 12:30 FOR LUNCH

